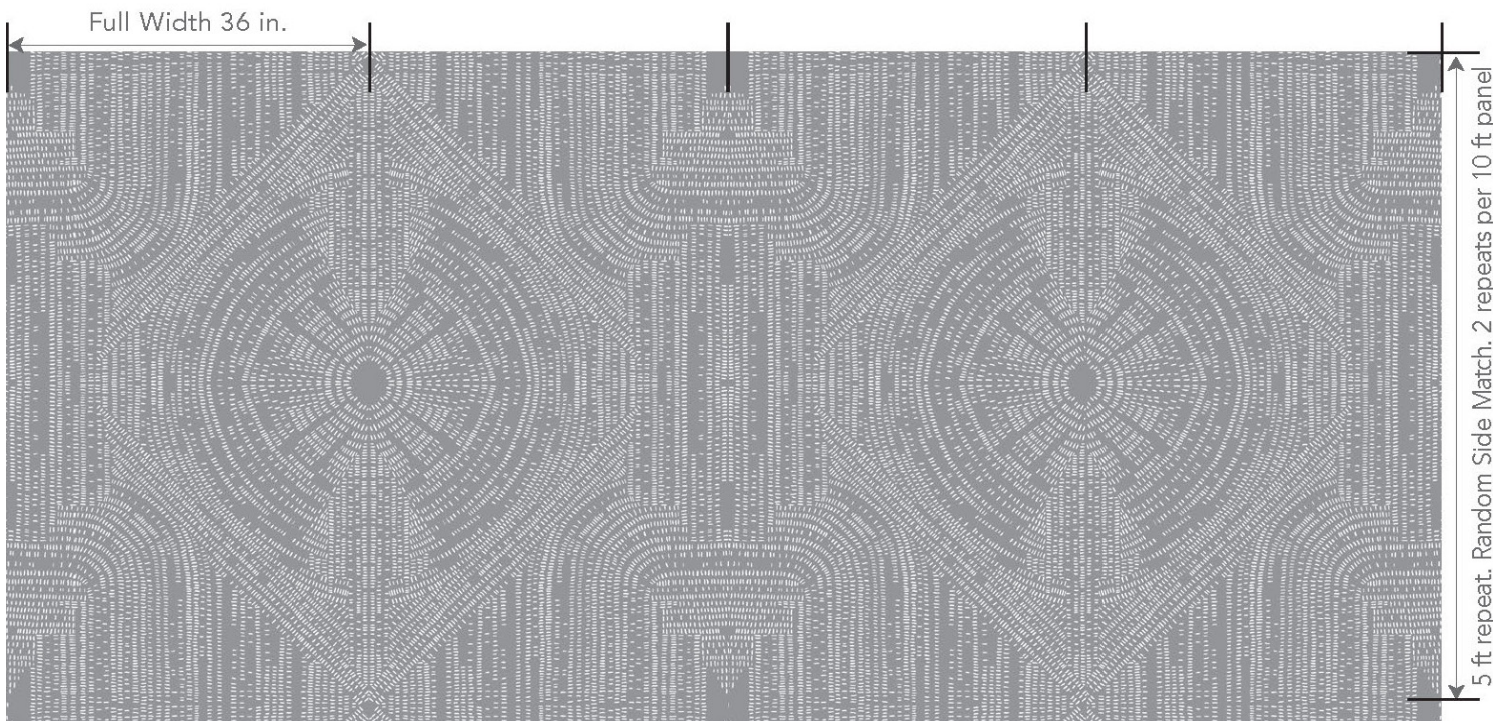


Hanging Instructions

Tribal



CAUTION

Inspect product for major defects in construction prior to cutting or installing. Returns will not be accepted on cut panels. Each panel is notated with the recommended sequential and directional placement necessary for a successful installation.

PROFESSIONAL HANGERS

Only professional wallpaper hangers should be contracted to install Gregorius|Pineo wallcoverings. Our wallcoverings are not covered under a warranty and no guarantee is offered against color fading, shrinkage, damage, or change due to contact with any liquid.

ADHESIVES

We suggest using a clear, non-staining, vinyl adhesive when installing our wallcoverings. Wall surfaces must be properly prepared prior to application.

TRIMMING

Our wallcoverings have not been pre-trimmed, and trimming is recommended for best results.



INSTALLATION

Prior to pasting wallcovering, it is recommended to lightly mist the back of the wallcovering with water prior to installation. This will prevent any shrinkage or bubbles from forming after the wallcovering is adhered to the wall.

If you have any questions, please feel free to call us directly.